

SEAFORTH



MARINE & OFFSHORE

# OVERVIEW CATALOGUE

Marine Electrical Specialists

For more information or to place an order  
email [enquiries@seaforthmarine.co.uk](mailto:enquiries@seaforthmarine.co.uk)  
or call 0151 922 1920

# CONTENTS

## CONTROL GEAR, CIRCUIT BREAKERS & SWITCHES

3	CONTROL & AUTOMATION
8	CIRCUIT BREAKERS
9	LIMIT SWITCHES
9	SWITCHES & ISOLATORS

## LIGHTING & LAMPS

10	MARINE LIGHTING, LED & FLUORESCENT
11	WELL GLASS FITTINGS
11	LED FLOODLIGHTS
12	NAVIGATION LANTERNS
12	NAVIGATION LAMPS
13	GLS LAMPS
13	LED LAMPS
15	FLUORESCENT LAMPS
16	LED INDICATOR LAMPS

## WIRING ACCESSORIES

17	HNA WIRING ACCESSORIES
17	CEE TYPE WIRING ACCESSORIES
19	JAPANESE WIRING ACCESSORIES
20	INDOOR WIRING ACCESSORIES

## CABLE & ACCESSORIES

21	CABLE
22	JUNCTION BOXES
23	CABLE GLANDS
23	CRIMP TERMINALS
25	WIRE CONNECTORS & TERMINALS
26	CABLE TIES, TAPES & INSULATION

## BATTERIES

27	BATTERIES
----	-----------



CONTROL & AUTOMATION

Schneider Push Button Assembly, Flush Button, Spring Return, 22mm



CODE	DESCRIPTION
<b>XB4BA11</b>	White button, 1 N/O contact block
<b>XB4BA21</b>	Black button, 1 N/O contact block
<b>XB4BA31</b>	Green button, 1 N/O contact block
<b>XB4BA42</b>	Red button, 1 N/C contact block
<b>XB4BA51</b>	Yellow button, 1 N/O contact block
<b>XB4BA61</b>	Blue button, 1 N/O contact Block

Schneider Emergency Stop Push Button Assembly



CODE	DESCRIPTION
<b>XB4BS8445</b>	40mm, Red, twist to reset button, 1 N/O & 1 N/C contact

Schneider Pushbutton Head, Flush, Spring Return, 22mm



CODE	COLOUR
<b>ZB4BA1</b>	White
<b>ZB4BA2</b>	Black
<b>ZB4BA3</b>	Green
<b>ZB4BA4</b>	Red
<b>ZB4BA5</b>	Yellow
<b>ZB4BA6</b>	Blue

Schneider Selector Switch Assembly, Spring Return, 22mm



CODE	DESCRIPTION
<b>XB4BD41</b>	2 Position, return right to left, 1 N/O contact
<b>XB4BD53</b>	3 Position, return to centre, 2 N/O contacts

Schneider Selector Switch Assembly, Stay Put, 22mm



CODE	DESCRIPTION
<b>XB4BD21</b>	2 Position, 1 N/O contact
<b>XB4BD25</b>	2 Position, 1 N/O & 1 N/C contact
<b>XB4BD33</b>	3 Position, centre off, 2 N/O contacts

Schneider LED Illuminated Push Button Assembly, Flush Button, Spring Return, 22mm, 24V AC/DC



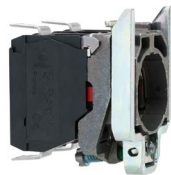
CODE	DESCRIPTION
<b>XB4BW31B5</b>	White button, 1 N/O & 1 N/C contact
<b>XB4BW33B5</b>	Green button, 1 N/O & 1 N/C contact
<b>XB4BW34B5</b>	Red button, 1 N/O & 1 N/C contact
<b>XB4BW35B5</b>	Orange button, 1 N/O & 1 N/C contact
<b>XB4BW36B5</b>	Blue button, 1 N/O & 1 N/C contact

Schneider Emergency Stop Push Button Head, 22mm



CODE	DESCRIPTION
<b>ZB4BT84</b>	Push - pull actuator, 40mm, Red
<b>ZB4BS84</b>	Turn to release actuator, 40mm, Red

Schneider Contact Block With Fixing Collar



CODE	DESCRIPTION
<b>ZB4BZ101</b>	1 N/O
<b>ZB4BZ102</b>	1 N/C
<b>ZB4BZ103</b>	2 N/O
<b>ZB4BZ104</b>	2 N/C
<b>ZB4BZ105</b>	1 N/O & 1 N/C

Schneider LED Illuminated Push Button Assembly, Flush Button, Spring Return, 22mm, 110/120V AC



CODE	DESCRIPTION
<b>XB4BW31G5</b>	White button, 1 N/O & 1 N/C contact
<b>XB4BW33G5</b>	Green button, 1 N/O & 1 N/C contact
<b>XB4BW34G5</b>	Red button, 1 N/O & 1 N/C contact
<b>XB4BW35G5</b>	Orange button, 1 N/O & 1 N/C contact
<b>XB4BW36G5</b>	Blue button, 1 N/O & 1 N/C contact





**Schneider Contact Block**



CODE	DESCRIPTION
ZBE101	1 N/O
ZBE102	1 N/C

**Schneider LED Illuminated Push Button Assembly, Flush Button, Spring Return, 22mm, 220/240V AC**



CODE	DESCRIPTION
<b>XB4BW31M5</b>	White button, 1 N/O & 1 N/C contact
<b>XB4BW33M5</b>	Green button, 1 N/O & 1 N/C contact
<b>XB4BW34M5</b>	Red button, 1 N/O & 1 N/C contact
<b>XB4BW35M5</b>	Orange button, 1 N/O & 1 N/C contact
<b>XB4BW36M5</b>	Blue button, 1 N/O & 1 N/C contact

**Schneider LED Illuminated Push Button Head, Flush, Spring Return, 22mm**



CODE	COLOUR
<b>ZB4BW313</b>	White
<b>ZB4BW333</b>	Green
<b>ZB4BW343</b>	Red
<b>ZB4BW353</b>	Orange
<b>ZB4BW363</b>	Blue
<b>ZB4BW383</b>	Yellow

**Schneider LED Pilot Light Complete Assembly, 220-240V AC**



CODE	COLOUR
<b>XB4BVM1</b>	White
<b>XB4BVM3</b>	Green
<b>XB4BVM4</b>	Red
<b>XB4BVM5</b>	Orange
<b>XB4BVM6</b>	Blue

**Schneider LED Pilot Light Complete Assembly, 110-120V AC**



CODE	COLOUR
<b>XB4BVG1</b>	White
<b>XB4BVG3</b>	Green
<b>XB4BVG4</b>	Red
<b>XB4BVG5</b>	Orange
<b>XB4BVG6</b>	Blue

**Schneider LED Pilot Light Complete Assembly, 24V AC/DC**



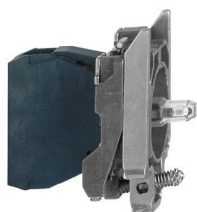
CODE	COLOUR
<b>XB4BVB1</b>	White
<b>XB4BVB3</b>	Green
<b>XB4BVB4</b>	Red
<b>XB4BVB5</b>	Orange
<b>XB4BVB6</b>	Blue

**Schneider Pilot Light Head for LED Light Source**



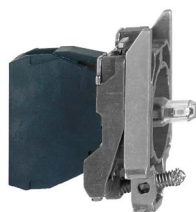
CODE	COLOUR
<b>ZB4BV013</b>	White
<b>ZB4BV033</b>	Green
<b>ZB4BV043</b>	Red
<b>ZB4BV053</b>	Orange
<b>ZB4BV063</b>	Blue

**Schneider LED Block with Fixing Collar, 220-240V AC**



CODE	COLOUR
<b>ZB4BVM1</b>	White
<b>ZB4BVM3</b>	Green
<b>ZB4BVM4</b>	Red
<b>ZB4BVM5</b>	Orange
<b>ZB4BVM6</b>	Blue

**Schneider LED Block with Fixing Collar, 110-120V AC**



CODE	COLOUR
<b>ZB4BVG1</b>	White
<b>ZB4BVG3</b>	Green
<b>ZB4BVG4</b>	Red
<b>ZB4BVG5</b>	Orange
<b>ZB4BVG6</b>	Blue

**Schneider LED Block with Fixing Collar, 24V AC/DC**



CODE	COLOUR
<b>ZB4BVB1</b>	White
<b>ZB4BVB3</b>	Green
<b>ZB4BVB4</b>	Red
<b>ZB4BVB5</b>	Orange
<b>ZB4BVB6</b>	Blue

**Schneider LED Lamp Block, 220-240V AC**



CODE	COLOUR
<b>ZBVM1</b>	White
<b>ZBVM3</b>	Green
<b>ZBVM4</b>	Red
<b>ZBVM5</b>	Orange
<b>ZBVM6</b>	Blue
<b>ZBVM8</b>	Yellow





Schneider LED Lamp Block,  
110-120V AC



CODE	COLOUR
ZBVG1	White
ZBVG3	Green
ZBVG4	Red
ZBVG5	Orange
ZBVG6	Blue
ZBVG8	Yellow

Schneider LED Lamp Block,  
24V AC/DC



CODE	COLOUR
ZBVB1	White
ZBVB3	Green
ZBVB4	Red
ZBVB5	Orange
ZBVB6	Blue
ZBVB8	Yellow

Schneider Pendant Controller  
for Control Circuit



CODE	DESCRIPTION
XACA271	2 Button, Up / Down 4 Button, Left / Right / Up / Down
XACA481	4 Button, Left / Right / Up / Down

Schneider Start Station



CODE	DESCRIPTION
XALD102	Start Control station, 1 Green pushbutton, spring return, N/O contact

Schneider Stop / Start Station,  
IP65



CODE	DESCRIPTION
XALD213	Control station, 1 Green & 1 Red pushbutton, spring return, 1 N/O & 1 N/C contact

Schneider Up / Down / Stop  
Station, IP65



CODE	DESCRIPTION
XALD324	Up / Down / Stop 3 button control station, spring return

Schneider Emergency Stop  
Station, IP65



CODE	DESCRIPTION
XALK178	Emergency Stop, turn to release 40mm Red button, 1 N/C contact

Schneider Pendant Controller  
for Direct Power Circuit



CODE	DESCRIPTION
XACB219	2 Button, Up / Down
XACB491	4 Button, left / right/ up / down

Schneider Contactor 9A 4kW, 3 Pole, 3 Normally Open  
Main Contacts, Auxiliary Contacts 1 N/O & 1 N/C



CODE	DESCRIPTION
LC1D09BD	24V DC
LC1D09B7	24V AC
LC1D09F7	110V AC
LC1D09P7	230V AC
LC1D09V7	400V AC
LC1D09R7	440V AC

Schneider Contactor 12A 5.5kW, 3 Pole, 3 Normally Open  
Main Contacts, Auxiliary Contacts 1 N/O & 1 N/C



CODE	DESCRIPTION
LC1D12BD	24V DC
LC1D12B7	24V AC
LC1D12F7	110V AC
LC1D12P7	230V AC
LC1D12V7	400V AC
LC1D12R7	440V AC

Schneider Contactor 18A 7.5kW, 3 Pole, 3 Normally Open  
Main Contacts, Auxiliary Contacts 1 N/O & 1 N/C



CODE	DESCRIPTION
LC1D18BD	24V DC
LC1D18B7	24V AC
LC1D18F7	110V AC
LC1D18P7	230V AC
LC1D18V7	400V AC
LC1D18R7	440V AC

Schneider Contactor 25A 11kW, 3 Pole, 3 Normally Open  
Main Contacts, Auxiliary Contacts 1 N/O & 1 N/C



CODE	DESCRIPTION
LC1D25BD	24V DC
LC1D25B7	24V AC
LC1D25F7	110V AC
LC1D25P7	230V AC
LC1D25V7	400V AC
LC1D25R7	440V AC





Schneider Contactor 32A 15kW, 3 Pole, 3 Normally Open Main Contacts, Auxiliary Contacts 1 N/O & 1 N/C



CODE	DESCRIPTION
LC1D32BD	24V DC
LC1D32B7	24V AC
LC1D32F7	110V AC
LC1D32P7	230V AC
LC1D32V7	400V AC
LC1D32R7	440V AC

Schneider Contactor 40A 18.5kW, 3 Pole, 3 Normally Open Main Contacts, Auxiliary Contacts 1 N/O & 1 N/C



CODE	DESCRIPTION
LC1D40AF7	110V AC
LC1D40AP7	230V AC
LC1D40AV7	400V AC
LC1D40AR7	440V AC

Schneider Contactor 50A 22kW, 3 Pole, 3 Normally Open Main Contacts, Auxiliary Contacts 1 N/O & 1 N/C



CODE	DESCRIPTION
LC1D50AF7	110V AC
LC1D50AP7	230V AC
LC1D50AV7	400V AC
LC1D50AR7	440V AC

Schneider Contactor 65A 30kW, 3 Pole, 3 Normally Open Main Contacts, Auxiliary Contacts 1 N/O & 1 N/C



CODE	DESCRIPTION
LC1D65AF7	110V AC
LC1D65AP7	230V AC
LC1D65AV7	400V AC
LC1D65AR7	440V AC

Schneider Contactor 80A 37kW, 3 Pole, 3 Normally Open Main Contacts, Auxiliary Contacts 1 N/O & 1 N/C



CODE	DESCRIPTION
LC1D80F7	110V AC
LC1D80P7	230V AC
LC1D80V7	400V AC
LC1D80R7	440V AC

Schneider Contactor 95A 45kW, 3 Pole, 3 Normally Open Main Contacts, Auxiliary Contacts 1 N/O & 1 N/C



CODE	DESCRIPTION
LC1D95F7	110V AC
LC1D95P7	230V AC
LC1D95V7	400V AC
LC1D95R7	440V AC

Schneider Contactor 115A 55kW, 3 Pole, 3 Normally Open Main Contacts, Auxiliary Contacts 1 N/O & 1 N/C



CODE	DESCRIPTION
LC1D115F7	110V AC
LC1D115P7	230V AC
LC1D115V7	400V AC
LC1D115R7	440V AC

Schneider Contactor 150A 75kW, 3 Pole, 3 Normally Open Main Contacts, Auxiliary Contacts 1 N/O & 1 N/C



CODE	DESCRIPTION
LC1D150F7	110V AC
LC1D150P7	230V AC
LC1D150V7	400V AC
LC1D150R7	440V AC

Schneider Side Mounting Auxiliary Contact Blocks to Suit LC1D Series Contactors



CODE	DESCRIPTION
LAD8N11	1 NO / 1 NC
LAD8N20	2 NO
LAD8N02	2 NC

Schneider Timer Delay Auxiliary Contact Block, On-Delay



CODE	DESCRIPTION
LAD-T2	0.1 - 30 Sec
LAD-T4	10 - 180 Sec
LAD-S2	1 - 30 Sec

Schneider Timer Delay Auxiliary Contact Block, Off-Delay



CODE	DESCRIPTION
LAD-R2	0.1 - 30Sec
LAD-R4	10 - 180 Sec

**Schneider Thermal Overload Relay to Suit D09 to D38 Contactors**



CODE	DESCRIPTION
LRD01	0.10 - 0.16A
LRD02	0.16 - 0.25A
LRD03	0.25 - 0.40A
LRD04	0.40 - 0.63A
LRD05	0.60 - 1.0A
LRD06	1.0 - 1.6A
LRD07	1.6 - 2.5A

CODE	DESCRIPTION
LRD08	2.5A - 4.0A
LRD09	4.0 - 6.0A
LRD10	6.0 - 10.0A
LRD12	5.5 - 8.0A
LRD14	7.0 - 10.0A
LRD16	9.0 - 13.0A
LRD21	12.0 - 18.0A

CODE	DESCRIPTION
LRD22	16.0 - 24.0A
LRD32	23.0 - 32.0A
LRD35	30.0 - 38.0A





Schneider Thermal Overload Relay to Suit D80 to D95 Contactors



CODE	DESCRIPTION
LRD3353	23 - 32A
LRD3355	30 - 40A
LRD3357	37 - 50A
LRD3359	48 - 65A
LRD3361	55 - 70A
LRD3363	63 - 80A
LRD3365	80 - 104A

Schneider Thermal Overload Relay to Suit D40A to D65A Contactors



CODE	DESCRIPTION
LRD325	17 - 25A
LRD332	23 - 32A
LRD340	30 - 40A
LRD350	37 - 50A
LRD365	45 - 65A

Schneider Thermal Overload Relay to Suit D115 to D150 Contactors



CODE	DESCRIPTION
LRD4365	80 - 104A
LRD4367	95 - 120A

Schneider Thermal Overload Relay to Suit D115 to D150 Contactors



CODE	DESCRIPTION
LRD4365	80 - 104A
LRD4367	95 - 120A

Motor Circuit Breaker, 3 Pole, up to 15kW, Rotary Handle



CODE	DESCRIPTION
GV2P01	0.1 - 0.16A
GV2P02	0.16 - 0.25A
GV2P03	0.25 - 0.4A
GV2P04	0.4 - 0.63A
GV2P05	0.63 - 1.0A
GV2P06	1.0 - 1.6A
GV2P07	1.6 - 2.5A
GV2P08	2.5 - 4.0A
GV2P10	4 - 6.3A
GV2P14	6 - 10A
GV2P16	9 - 14A
GV2P20	13 - 18A
GV2P21	17 - 23A
GV2P22	20 - 25A
GV2P32	24 - 32A

Motor Circuit Breaker, 3 Pole, up to 11kW, Pushbutton



CODE	DESCRIPTION
GV2ME01	0.10 - 0.16A
GV2ME02	0.16 - 0.25A
GV2ME03	0.25 - 0.4A
GV2ME04	0.4 - 0.63A
GV2ME05	0.63 - 1.0A
GV2ME06	1.0 - 1.6A
GV2ME07	1.6 - 2.5A
GV2ME08	2.5 - 4.0A
GV2ME10	4.0 - 6.3A
GV2ME14	6.0 - 10A
GV2ME16	9.0 - 16A
GV2ME20	13 - 18A
GV2ME21	17 - 23A
GV2ME22	20 - 25A
GV2ME32	24 - 32A

Schneider Control Relay, 3 Normally Open / 2 Normally Closed, 10 Amp



CODE	DESCRIPTION
CAD32BD	24V DC
CAD32B7	24V AC
CAD32F7	110V AC
CAD32P7	230V AC
CAD32V7	400V AC
CAD32R7	440V AC

Schneider Control Relay, 5 Normally Open, 10 Amp



CODE	DESCRIPTION
CAD50BD	24V DC
CAD50B7	24V AC
CAD50F7	110V AC
CAD50P7	230V AC
CAD50V7	400V AC
CAD50R7	440V AC

Schneider Front Mounting Auxiliary Contact Blocks to Suit LC1D Series Contactors



CODE	DESCRIPTION
LADN10	1 NO
LADN01	1 NC
LADN11	1 NO / 1 NC
LADN20	2 NO
LADN02	2 NC
LADN22	2 NO / 2 NC
LADN31	3 NO / 1 NC
LADN13	1 NO / 3 NC
LADN40	4 NO
LADN04	4 NC

Aux. contact, Short-circuit signal 1 C/O



CODE	DESCRIPTION
GVAM11	1 NO & 1 NC, for GV2 - GV3

Motor Circuit Breaker, 3 Pole, up to 45kW, Rotary Handle



CODE	DESCRIPTION
GV3P13	9 - 13A
GV3P18	12 - 18A
GV3P25	17 - 25A
GV3P32	23 - 32A
GV3P40	30 - 40A
GV3P50	37 - 50A
GV3P65	48 - 65A





**Accessories for GV2 & GV3**



CODE	DESCRIPTION
<b>GVAE11</b>	Aux. contact front side, 1 N/O & 1 N/C
<b>GVAE20</b>	Aux. contact front side, 2 N/O
<b>GVAN11</b>	Aux contact, left side, 1 N/O & 1 N/C
<b>GV2MC02</b>	Enclosure for GV2ME, IP55

**CIRCUIT BREAKERS**

**Under Voltage Release, UVR, Type MN**



CODE	DESCRIPTION
<b>LV429410</b>	24V DC
<b>LV429404</b>	24V AC
<b>LV429406</b>	110/130VAC
<b>LV429407</b>	220/240V AC
<b>LV429408</b>	380/440V AC

**Shunt trip, type MX**



CODE	DESCRIPTION
<b>LV429390</b>	24V DC
<b>LV429384</b>	24V AC
<b>LV429386</b>	110/130VAC
<b>LV429387</b>	220/240V AC
<b>LV429388</b>	380/440V AC

**Schneider Acti 9 iC60H Miniature Circuit Breakers, MCB, Type C 10kA**

**Single Pole**



CODE	DESCRIPTION
<b>A9F54101</b>	1 Amp
<b>A9F54102</b>	2 Amp
<b>A9F54104</b>	4 Amp
<b>A9F54106</b>	6 Amp
<b>A9F54110</b>	10 Amp
<b>A9F54116</b>	16 Amp
<b>A9F54120</b>	20 Amp
<b>A9F54125</b>	25 Amp
<b>A9F54132</b>	32 Amp
<b>A9F54140</b>	40 Amp
<b>A9F54150</b>	50 Amp
<b>A9F54163</b>	63 Amp

**Double Pole**



CODE	DESCRIPTION
<b>A9F54201</b>	1 Amp
<b>A9F54202</b>	2 Amp
<b>A9F54204</b>	4 Amp
<b>A9F54206</b>	6 Amp
<b>A9F54210</b>	10 Amp
<b>A9F54216</b>	16 Amp
<b>A9F54220</b>	20 Amp
<b>A9F54225</b>	25 Amp
<b>A9F54232</b>	32 Amp
<b>A9F54240</b>	40 Amp
<b>A9F54250</b>	50 Amp
<b>A9F54263</b>	63 Amp

**Triple Pole**



CODE	DESCRIPTION
<b>A9F54302</b>	2 Amp
<b>A9F54304</b>	4 Amp
<b>A9F54306</b>	6 Amp
<b>A9F54310</b>	10 Amp
<b>A9F54316</b>	16 Amp
<b>A9F54320</b>	20 Amp
<b>A9F54325</b>	25 Amp
<b>A9F54332</b>	32 Amp
<b>A9F54340</b>	40 Amp
<b>A9F54350</b>	50 Amp
<b>A9F54363</b>	63 Amp

Schneider standard protection electronic trip unit, Micrologic 2.2

To Suit NSX100/ 160 / 250 Series, 3 Pole



CODE	DESCRIPTION
<b>LV429072</b>	Micrologic 2.2 40 Amp
<b>LV429070</b>	Micrologic 2.2 100 Amp

To Suit NSX160 / 250 Series, 3 Pole

CODE	DESCRIPTION
<b>LV430470</b>	Micrologic 2.2 160 Amp

To Suit NSX160 / 250 Series, 3 Pole

CODE	DESCRIPTION
<b>LV431470</b>	Micrologic 2.2 250 Amp

**Schneider Compact NSX MCCB Basic 3 Pole Frame Without Trip Unit, Fixed / Front Connection**



CODE	DESCRIPTION
<b>LV429003</b>	NSX100F 36kA 380/415V
<b>LV429006</b>	NSX100N 50kA 380/415V
<b>LV429005</b>	NSX100H 70kA 380/415V
<b>LV429006</b>	NSX100F 36kA 380/415V



CODE	DESCRIPTION
<b>LV430403</b>	NSX160F 36kA 380/415V
<b>LV430406</b>	NSX160N 50kA 380/415V
<b>LV430404</b>	NSX160F 70kA 380/415V



CODE	DESCRIPTION
<b>LV431403</b>	NSX250F 36kA 380/415V
<b>LV431406</b>	NSX250N 50kA 380/415V
<b>LV431404</b>	NSX250F 70kA 380/415V



CODE	DESCRIPTION
<b>29450</b>	Auxiliary switch, changeover, OF-SD-SDE-SDV

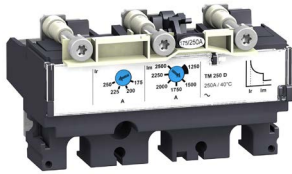






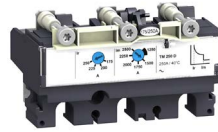
Schneider Standard Protection Thermal Magnetic Trip Unit, TM-D

To Suit NSX100/ 160 / 250 Series, 3 Pole



CODE	DESCRIPTION
LV429037	TM16D
LV429036	TM25D
LV429035	TM32D
LV429034	TM40D
LV429033	TM50D
LV429032	TM63D
LV429031	TM80D
LV429030	TM100D

To Suit NSX160 Series, 3 Pole



CODE	DESCRIPTION
LV430431	TM125D
LV430430	TM160D

To Suit NSX250 Series, 3 Pole



CODE	DESCRIPTION
LV431432	TM160D
LV431431	TM200D

LIMIT SWITCHES

Siemens Limit Switches, Metal Body, 40mm Wide EN50041, Snap Action NO/NC Contacts, M20 Entry, IP66



CODE	DESCRIPTION
3SE5112-0CC02	Rounded plunger with 3mm over travel



CODE	DESCRIPTION
3SE5112-0CD02	Metal roller plunger



CODE	DESCRIPTION
3SE5112-0CE01	Metal roller lever



CODE	DESCRIPTION
3SE5112-0CH01	Metal roller arm 27mm with plastic roller 19mm



CODE	DESCRIPTION
3SE5112-0CH50	Adjustable roller arm 100mm with plastic roller 19mm



Rotary Isolator Switches, Yellow / Red Handle, Padlockable, IP65

CODE	DESCRIPTION
RS100001	4 Pole 25 Amp, 11kW.
RS100002	4 Pole 32 Amp, 15kW.
RS100003	4 Pole 40 Amp, 18.5kW.
RS100004	4 Pole 63 Amp, 30kW.

Waterproof Switch, Off-On, IP66



CODE	DESCRIPTION
RS200001	4 Pole 20A

SWITCHES & ISOLATORS

Can't find what you are looking for?

Call us on  
0151 922 1920





**MARINE LIGHTING, LED & FLUORESCENT**

Watertight multi-purpose luminaire suitable for engine rooms, decks, cargo holds, work spaces & weather exposed areas. Steel body, Zinc & RAL 9016 White powder coated, Polycarbonate cover, through wiring, electronic ballast 220-240V 50/60Hz. IP67



CODE	IMPA	DESCRIPTION
LFL10001	791951	LED 17W, 4000K, replaces 2x18W fluorescent
LFL10002	791951	LED 17W, 5000K, replaces 2x18W fluorescent
LFL10003	-	LED 33W, 4000K, replaces 2x36W fluorescent
LFL10004	-	LED 33W, 5000K, replaces 2x36W fluorescent
LFL20001	791913	Fluorescent T8, 2x18W
LFL20002	791887	Fluorescent T8, 2x36W

Surface luminaire for accommodation areas. Steel body White powder coated, Opal acrylic cover, electronic ballast 220-240V 50/60Hz. IP22



CODE	IMPA	DESCRIPTION
LFS10001	791903	Fluorescent T8, 2x18W
LFS10002	-	LED Module 18W

Fluorescent berth / bunk light. Aluminium body White powder coated, Opal Polycarbonate cover, switched.



CODE	IMPA	DESCRIPTION
LFB10001	792145	7 - 9 Watt G23, 220V 50Hz
LFB10002	792145	7 - 9 Watt G23, 220V 60Hz

LED emergency bulkhead, maintained / non-maintained, ultra-slim White Polycarbonate body, M20 side & rear entries, supplied with adhesive legends. IP65



CODE	DESCRIPTION
SEA-GUARD3M	3 Watt, 18 metre viewing distance

Watertight multi-purpose fluorescent luminaire with emergency Ba15d lampholder fitted. Suitable for engine rooms, decks, cargo holds, work spaces & weather exposed areas. Steel body, White powder coated, Polycarbonate cover, through wiring, 220-240V 50/60Hz, IP67



CODE	IMPA	DESCRIPTION
LFL30001	791913	Fluorescent 2x18W, Type JCY27-2E
LFL30002	791887	Fluorescent 2x36W, Type JCY48-2E

Polycarbonate LED multi-purpose luminaire, 220-240V 50/60Hz, IP65



CODE	IMPA	DESCRIPTION
LFL40001	791894	24W Col. 6500K, replaces 2x18W fluorescent
LFL40002	791900	40W Col. 6500K, replaces 2x36W fluorescent

Corner luminaire for accommodation areas. Steel body White powder coated, Opal acrylic cover, electronic ballast 220-240V 50/60Hz. IP22



CODE	DESCRIPTION
LFC10001	Fluorescent T8, 1x18W
LFC10002	LED Module 10W

Fluorescent bathroom / shaver light. Aluminium body White powder coated, Opal acrylic cover, shaver outlet, electronic ballast 220-240V 50/60Hz. IP44



CODE	DESCRIPTION
LFB20001	15W T8

LED downlighter, ultra slim ideal for low ceiling voids, Opal diffuser, IP44



CODE	DESCRIPTION
SEA-LITE10	10W Colour 4000K, cut out 126mm
SEA-LITE13	13W Colour 4000K, cut out 168mm
SEA-LITE19	19W Colour 4000K, cut out 228mm

LED multi-purpose ceiling / wall light, square body, White Polycarbonate, Opal diffuser. IP65



CODE	DESCRIPTION
SEA-ASTRO7	7W Colour 4000K, 200x200x65mm
SEA-ASTRO14	14W Colour 4000K, 260x260x75mm





## WELL GLASS FITTINGS

European HNA Brass Wellglass Fittings, Clear Glasses with Drip Hole, Guarded, 60W max., IP56



CODE	DESCRIPTION
LW100001	E27 lampholder, single glanded cable entry 0=
LW100002	E27 lampholder, twin glanded cable entry 0=
LW100003	BC B22d lampholder, single glanded cable entry 0=
LW100004	BC B22d lampholder, twin glanded cable entry 0=



Japenese Resin Wellglass Fittings, Clear Class, Guarded, E26/7 Lampholder, IP56



CODE	IMPA	DESCRIPTION
LW100005	792057	Pendent mounted, twin glanded cable entry 0=
LW100006	792068	Wall mounted, right angled

LED Japenese Resin Wellglass Fittings, Clear Class, Guarded, 100-240V 10W, IP56



CODE	IMPA	DESCRIPTION
LW100007	792057	Pendent mounted, twin glanded cable entry 0=
LW100008	792068	Wall mounted, right angled

## LED FLOODLIGHTS

Non-corrosive LED floodlight, IP65. Voltage range 85-265 Volt. ASA UV resistant plastic body, stainless steel fasteners with 1 Metre H07-RNF 3 core cable. Non-corrosive construction makes this ideal for marine, coastal, harsh weather & exposed environments.



CODE	IMPA	DESCRIPTION
50LEDNCF	791819	50W / 5,000Lm, 6500K Daylight
80LEDNCF	-	80W / 8,000Lm, 6500K Daylight
100LEDNCF	791825	100W / 10,000Lm, 6500K Daylight
160LEDNCF	791827	160W / 16,000Lm, 6500K Daylight
200LEDNCF	791829	200W / 20,000Lm, 6500K Daylight

Heavy duty LED floodlight, IP65. Voltage range 100-240V AC, Aluminium body, stainless steel fasteners with 0.5 Metre cable. Suitable for illumination of deck, engine room & open spaces.



CODE	IMPA	DESCRIPTION
50LEDFL6500	791819	50W / 5,130Lm, 6500K Daylight
70LEDFL6500	-	70W / 7,010Lm, 6500K Daylight
100LEDFL6500	791825	100W / 9,350Lm, 6500K Daylight
150LEDFL6500	791827	150W / 15,960Lm, 6500K Daylight

Aluminium marine grade LED floodlight, stainless steel bracket, 90-260V 50-60Hz., IP67



CODE	IMPA	DESCRIPTION
LFL10001	791819	50W / 7500lm, wide beam
LFL10002	791825	100W / 1500lm, wide beam
LFL10003	791827	150W / 22500lm, wide beam



Heavy duty marine grade LED floodlight, IP67. Voltage range 100-265V AC, powder coated Aluminium body, stainless steel fasteners. Suitable for illumination of deck, engine room & open spaces.



CODE	IMPA	DESCRIPTION
100LEDFL675000	791825	100W / 10,000Lm, 5000K Daylight
150LEDFL675000	791827	150W / 16,000Lm, 5000K Daylight

Heavy duty low-voltage LED floodlight, IP65. Voltage range 10-30V DC, Aluminium body, stainless steel fasteners with 0.5 metre cable. Suitable for illumination of deck, engine room & open spaces.



CODE	IMPA	DESCRIPTION
30LEDFLV6500	791819	30W / 3,250Lm, 6500K Daylight





## NAVIGATION LANTERNS

Navigation Lanterns, Single Tier DHR70, for Vessels Over 20 metres.  
Lampholder P28s for Lamps 24, 110, 220, 230V



CODE	IMPA	DESCRIPTION
NL100001	-	Starboard light, Green, 112,5°, 3 nm.
NL100002	-	Port light, Red, 112,5°, 3 nm.
NL100003	-	Masthead light, 225°, 6 nm.
NL100004	-	Stern light, 135°, 3 nm.
NL100005	-	Stern light - Red (Suez), 135°, 3 nm.
NL100006	370425	Towing light - Yellow, 135°, 3 nm.
NL100007	370526	All-round White, 360°, 3 nm.
NL100008	-	White, Manoeuvring, 360°, 5 nm.
NL100009	370527	All-round Red, 360°, 3 nm.
NL100010	370528	All-round Green, 360°, 3 nm.

Navigation Lanterns, Duplex DHR70, for Vessels Over 20 metres.  
Lampholder P28s for Lamps 24, 110, 220/230V



CODE	IMPA	DESCRIPTION
NL200001	370422	Starboard light, Green, 112,5°, 3 nm.
NL200002	370423	Port light, Red, 112,5°, 3 nm.
NL200003	370421	Masthead light, 225°, 6 nm.
NL200004	370424	Stern light, 135°, 3 nm.
NL200005	370445	Towing light - Yellow, 135°, 3 nm.
NL200006	-	All-round White, 360°, 3 nm.
NL200007	-	All-round Red, 360°, 3 nm.
NL200008	-	All-round Green, 360°, 3 nm.
NL200009	370527	All-round Red, 360°, 3 nm.
NL200010	370528	All-round Green, 360°, 3 nm.

Navigation Lanterns, DHR55N, for Sea-going Vessels Under 50 metres.  
Lampholder Bay15d for Lamps 12V 25W or 24V 25W.



CODE	DESCRIPTION
NL300001	Starboard light, Green, 112,5°, 3 nm.
NL300002	Port light, Red, 112,5°, 3 nm.
NL300003	Masthead light, 225°, 6 nm.
NL300004	Stern light, 135°, 3 nm.
NL300005	Towing light - Yellow, 135°, 3 nm.
NL300006	All-round White, 360°, 3 nm.
NL300007	All-round Red, 360°, 3 nm.
NL300008	All-round Green, 360°, 3 nm.
NL300009	All-round Red, 360°, 3 nm.
NL300010	All-round Green, 360°, 3 nm.

## NAVIGATION LAMPS

P28s Navigation Lamps, Filament Type, Tubular T38x108



CODE	IMPA	DESCRIPTION
LN100001	790449	24V 40W 50CD
LN100002	790432	110V 60W 50CD
LN100003	790434	220V 65W 50CD
LN100004	790434	230V 65W 50CD

B22d Navigation Lamps, Filament Type, Tubular T38x98



CODE	IMPA	DESCRIPTION
LN200001	790440	24V 40W 50CD
LN200002	790427	110V 60W 50CD
LN200003	790429	220V 65W 50CD
LN200004	790448	220V 85W 65CD

E27 Navigation Lamps, Filament Type, Tubular



CODE	IMPA	DESCRIPTION
LN300001	790407	24V 60W 26CD, T38X98
LN300002	790422	110V 60W 50CD, T38X98
LN300003	790424	220V 65W 50CD, T38X98
LN300004	790424	220V 85W 65CD, T38X105

Bay15d Navigation Lamps, Filament Type, Tubular T25x70



CODE	IMPA	DESCRIPTION
LN400001	790407	12V 10W 12CD
LN400002	790422	12V 25W 40CD
LN400003	790424	24V 10W 12CD
LN400004	790424	24V 25W 40CD





**LED EMC Navigation Lamps, P28s, Tubular**



CODE	DESCRIPTION
LN500001	230V 10W, 1300Lm, Col, 865, T29x119
LN500002	240V 5W 550Lm, Col, 865, T32x110, Anodised Alu.
LN500003	110V 5W 550Lm, Col, 865, T32x110, Anodised Alu.
LN500004	24V 5W 550Lm, Col, 865, T32x110, Anodised Alu.

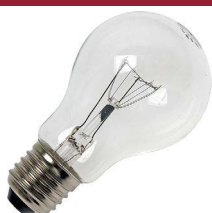
**Aldis Daylight Signal Lamps, P15d / P30d, G40x60, Mirrored**



CODE	DESCRIPTION
LN600001	11/12V 60W
LN600002	24V 60W

**GLS LAMPS**

Reinforced Construction Lamps, A60x108mm, 220-240V E27 Clear



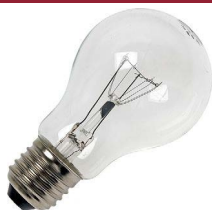
CODE	IMPA	WATT
LA100001	790192	25W
LA100002	790194	40W
LA100003	790195	60W

Reinforced Construction Lamps, A60x106mm, 220-240V BC B22 Clear



CODE	IMPA	WATT
LA110001	790217	25W
LA110002	790219	40W
LA110003	790220	60W

Reinforced Construction Lamps, A60x108mm, 110-130V E27 Clear



CODE	IMPA	WATT
LA120001	790184	40W
LA120002	790185	60W

Reinforced Construction Lamps, A60x106mm, 110-130V BC B22 Clear



CODE	IMPA	WATT
LA130001	790205	40W
LA130002	790219	60W

**Tungsten Halogen Searchlight Lamps, Tubular, Bi-pin Base**



CODE	DESCRIPTION
T12/T21	230V 650W GX9.5, 35x105mm
T11/T19	230V 1000W GX9.5, 35x105mm

CODE	DESCRIPTION
CP43	230V 2000W GY16, 27x124mm
CP41	230V 2000W G38, 31x216mm, IMPA 370533

**Low Voltage Lamps, A60x108mm, 24-28V E27 Clear**



CODE	IMPA	WATT
LA140001	790463	25W
LA140002	790464	40W
LA140003	790465	60W

**Low Voltage Lamps, A60x106mm, 24-28V BC B22 Clear**



CODE	IMPA	WATT
LA150001	790483	25W
LA150002	790484	40W
LA150003	790485	60W

**LED LAMPS**

**LED Retrofit T8 Tubes For Use With Conventional Control Gear, 220-240V AC, G13 Base**



CODE	DESCRIPTION
LT1000001	7.6W / 800Lm, colour 840 cool-white, 590x26.7mm, replaces 18W T8 fluorescent
LT1000002	7.6W / 800Lm, colour 865 daylight, 590x26.7mm, replaces 18W T8 fluorescent
LT1000003	16.2W / 1700Lm, colour 840 cool-white, 1200x26.7mm, replaces 36W T8 fluorescent
LT1000004	16.2W / 1700Lm, colour 865 daylight, 1200x26.7mm, replaces 36W T8 fluorescent

**LED Retrofit T8 Tubes For Use With Electronic Control Gear, 220-240V AC, G13 Base**



CODE	DESCRIPTION
LT2000001	7.5W / 1100Lm, colour 840 cool-white, 590x28mm, replaces 18W T8 fluorescent
LT2000002	7.5W / 1100Lm, colour 865 daylight, 590x28mm, replaces 18W T8 fluorescent
LT2000003	14W / 2100Lm, colour 840 cool-white, 1200x28mm, replaces 36W T8 fluorescent
LT2000004	14W / 2100Lm, colour 865 daylight, 1200x28mm, replaces 36W T8 fluorescent





LED GLS Retrofit Lamps, A60 GLS 60x110mm, 100-240V, Opal Globe, Non-Dimmable, Warm-White



CODE	IMPA	DESCRIPTION
<b>LG100001</b>	<b>790440</b>	E27, 10W / 810Lm, colour 827 warm white. 60W equivalent
<b>LG100002</b>	<b>790427</b>	E27, 12W / 970Lm, colour 827 warm white. 70W equivalent
<b>LG100003</b>	-	BC B22d, 10W / 810Lm, colour 827 warm white. 60W equivalent

LED Retrofit Candle Lamp, C35x100mm, 100-240V, Opal Globe, Non-Dimmable, Warm-White



CODE	DESCRIPTION
<b>LG300001</b>	E27, 3W / 250Lm, colour 830, 25W equivalent
<b>LG300002</b>	E14, 5W / 400Lm, colour 830, 35W equivalent

LED Retrofit Ball Lamp, G45x80mm, 100-240V, Opal Globe, Non-Dimmable, Warm-White



CODE	DESCRIPTION
<b>LG400001</b>	E27, 5W / 400Lm, colour 827, 35W equivalent
<b>LG400002</b>	E14, 5W / 400Lm, colour 827, 35W equivalent

LED Duo Lamp, G24d, 2 Pin, 230-240V AC, Cool White



CODE	DESCRIPTION
<b>LC110002</b>	6W, 520Lm, Col. 840, replaces 13W fluorescent, 35x131
<b>LC110003</b>	8W, 720Lm, Col. 840, replaces 18W fluorescent, 36x146

LED GLS Retrofit Lamps, A65 GLS 65x125mm, 100-240V, Opal Globe, Non-Dimmable, Warm-White



CODE	IMPA	DESCRIPTION
<b>LG100004</b>	<b>790267</b>	E27, 15W / 1150Lm, colour 827 warm white. 80W equivalent.

LED Retrofit Tube / Pygmy Lamp, T18x52mm, 230V, Opal Globe, Non-Dimmable, Warm-White



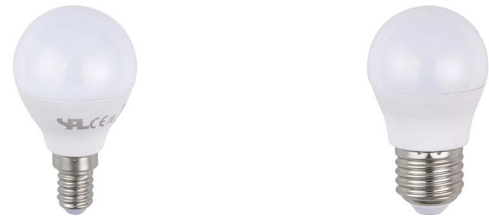
CODE	DESCRIPTION
<b>LG700001</b>	E14, 2W / 140Lm, colour 830, 15W equivalent

Low Voltage LED Retrofit A60 Lamp, 60x110mm, 12-60V AC/DC, Opal Globe, Non-Dimmable, Warm-White



CODE	DESCRIPTION
<b>LG200001</b>	E27, 7W / 550Lm, colour 830 warm white. 45W equivalent
<b>LG200002</b>	BC B22d, 7W / 550Lm, colour 830 warm white. 45W equivalent

Low Voltage LED Ball Lamp, G45x80mm, 12-60V, Opal Globe, Non-Dimmable, Warm-White



CODE	DESCRIPTION
<b>LG500001</b>	E14, 3W / 250Lm, colour 830 warm white. 25W equivalent
<b>LG500002</b>	E27, 3W / 250Lm, colour 830 warm white. 25W equivalent

LED Duo Lamp, G24q, 4 Pin, 230-240V AC, Cool White



CODE	DESCRIPTION
<b>LC120002</b>	6W, 520Lm, Col. 840, replaces 13W fluorescent, 35x131
<b>LC120003</b>	8W, 720Lm, Col. 840, replaces 18W fluorescent, 36x146





LED Retrofit GU10 MR16 Lamp, 50x54mm, 100-240V, Non-Dimmable, Warm-White



CODE	DESCRIPTION
<b>LG800001</b>	GU10, 4W / 250Lm, Colour 830, 36°
<b>LG800002</b>	GU10, 5W / 350Lm, Colour 830, 36°, 50W equivalent
<b>LG800003</b>	GU10, 7.5W / 460Lm, Colour 830, 36°

LED Retrofit Stick Lamp, T38x108mm, 100-240V, Opal Globe, Non-Dimmable, Warm-White



CODE	DESCRIPTION
<b>LG600001</b>	E14, 7W / 640Lm, colour 830, 50W equivalent
<b>LG600002</b>	E27, 7W / 640Lm, colour 830, 50W equivalent

## FLUORESCENT LAMPS

Fluorescent Tube for Flying Insect Trap



CODE	DESCRIPTION
<b>FT100030</b>	8W, 16x288mm, colour BL368, blacklight
<b>FT100031</b>	15W, 26x437mm, colour BL368 blacklight
<b>FT100032</b>	18W, 26x590mm, colour BL368 blacklight

Compact Fluorescent Lamp, Type S, G23 2 Pin



CODE	DESCRIPTION
<b>FC100001</b>	7W, 27x137mm, colour 840 cool-white
<b>FC100002</b>	9W, 27x167mm, colour 840 cool-white
<b>FC100003</b>	11W, 27x237mm, colour 840 cool-white

LED Retrofit High Wattage Lamps, 230V AC, E40 Base, 6500K



CODE	DESCRIPTION
<b>LG900001</b>	100W, 9500Lm, equivalent to 250W, E40
<b>LG900002</b>	150W, 15000Lm, equivalent to 400W, E40

Fluorescent Tubes, T8, G13 Base



CODE	IMPA	DESCRIPTION
<b>FT100000</b>	<b>791405</b>	15W 26x437mm, colour 33 cool-white
<b>FT100001</b>	<b>791425</b>	15W 26x437mm, colour 54 daylight
<b>FT100002</b>	<b>791412</b>	18W 26x590mm, colour 840 cool-white
<b>FT100003</b>	-	18W 26x590mm, colour 830 warm-white
<b>FT100004</b>	<b>791432</b>	18W 26x590mm, colour 865 daylight
<b>FT100005</b>	<b>791418</b>	36W 26x1200mm, colour 840 cool-white
<b>FT100006</b>	-	36W 26x1200mm, colour 830 warm-white
<b>FT100007</b>	<b>791438</b>	36W 26x1200mm, colour 865 daylight

Fluorescent Starter Switches



CODE	IMPA	DESCRIPTION
<b>FS100000</b>	<b>791504</b>	Philips S2, 4 - 22W, 2 pin P-21
<b>FS100001</b>	<b>791505</b>	Philips S10, 4 - 65W, 2 pin P-21

Miniature Fluorescent Tubes T5, G5 Base



CODE	IMPA	DESCRIPTION
<b>FT100020</b>	<b>791403</b>	8W 16x288mm, colour 33 cool-white
<b>FT100021</b>	<b>791423</b>	8W 16x288mm, colour 54 daylight
<b>FT100022</b>	-	13W 16x517mm, colour 33 cool-white

Compact Fluorescent Lamp, Duo, G24d 2 Pin



CODE	DESCRIPTION
<b>FC110001</b>	13W, G24d-1, 27x138mm, colour 840 cool-white
<b>FC110002</b>	13W, G24d-1, 27x138mm, colour 830 warm-white
<b>FC110003</b>	18W, G24d-2, 27x154mm, colour 840 cool-white
<b>FC110004</b>	18W, G24d-2, 27x154mm, colour 830 warm-white
<b>FC110005</b>	26W, G24d-3, 27x172mm, colour 840 cool-white
<b>FC110006</b>	26W, G24d-3, 27x172mm, colour 830 warm-white

Compact Fluorescent Lamp, Duo, G24q 4 Pin



CODE	DESCRIPTION
<b>FC120001</b>	13W, G24q-1, 27x138mm, colour 840 cool-white
<b>FC120002</b>	13W, G24q-1, 27x138mm, colour 830 warm-white
<b>FC120003</b>	18W, G24q-2, 27x154mm, colour 840 cool-white
<b>FC120004</b>	18W, G24q-2, 27x154mm, colour 830 warm-white
<b>FC120005</b>	26W, G24q-3, 27x172mm, colour 840 cool-white
<b>FC120006</b>	26W, G24q-3, 27x172mm, colour 830 warm-white





**Spiral Compact Fluorescent, 220-240V, E27**



CODE	IMPA	DESCRIPTION
FC200001	791584	9W, 49X102mm, E27 colour 827, warm-white
FC200002	791590	11W, 49x105mm, E27 colour 827, warm-white
FC200003	791596	15W, 49x113mm, E27 colour 827, warm-white

**Spiral Compact Fluorescent, 220-240V, BC B22**



CODE	DESCRIPTION
FC200011	9W, 49X102mm, BC B22d colour 827, warm-white
FC200012	11W, 49X102mm, BC B22d colour 827, warm-white
FC200013	15W, 49X102mm, BC B22d colour 827, warm-white

**LED INDICATOR LAMPS**

**LED Telephone (Taurus) Lamp, StarLED T6.8G, 6.8x44mm**



CODE	DESCRIPTION
IL300001	24/28V DC, White
IL300002	24/28V DC, Green
IL300003	24/28V DC, Red

**LED Telephone(Taurus) Lamp, StarLED T5.5, 5.5x30mm**



CODE	DESCRIPTION
IL400001	24/28V DC, White
IL400002	24/28V DC, Green
IL400003	24/28V DC, Red

**LED Indicator Lamp, StarLED Ba9s, T10x23.5mm**



CODE	DESCRIPTION
IL100001	24/28V AC/DC, White
IL100002	24/28V AC/DC, Green
IL100003	24/28V AC/DC, Red
IL100004	230V AC White
IL100005	230V AC Green
IL100006	230V AC Red

**LED Indicator Lamp, StarLED E10, T10x23.5mm**



CODE	DESCRIPTION
IL200001	24/28V AC/DC, White
IL200002	24/28V AC/DC, Green
IL200003	24/28V AC/DC, Red
IL200004	230V AC White
IL200005	230V AC Green
IL200006	230V AC Red

**LED Indicator Lamp, StarLED Ba7s, T7x20mm**



CODE	DESCRIPTION
IL500001	24/28V DC, White

**LED Indicator Lamp, StarLED, Midget Groove, 5.7x16mm T1 3/4**



CODE	DESCRIPTION
IL600001	24/28V DC, White

**LED Indicator Lamp, StarLED, Midget Flange 5.7x16mm T1 3/4**



CODE	DESCRIPTION
IL700001	24/28V DC, White

**LED Indicator Lamp, StarLED, Wedge Base, T5, W2x4.6d**



CODE	DESCRIPTION
IL800001	24/28V DC, White

**Need some help?**

**Call us on  
0151 922 1920**







## HNA WIRING ACCESSORIES

### Brass Switches, 2 Pole, 10 Amp, IP56



CODE	DESCRIPTION
WT100001	Switch, Single Gland Entry, 0-
WT100002	Switch, Twin Gland Entry, 0=
WT100003	Switch, Through Gland Entry, -0-

### Female Connector, 3 Pin, 10 Amp., IP56



CODE	DESCRIPTION
WT120001	Synthetic body

### Male Plug, 3 Pin, 10 Amp., IP56



CODE	IMPA	DESCRIPTION
WT110001	792881	Synthetic body
WT110002	792886	Brass body

### Switched Socket, 3 Pin, 10 Amp., IP56



CODE	IMPA	DESCRIPTION
WT140001	-	Sw. Socket, Single Left Entry, -0
WT140002	-	Sw. Socket, Single Right Entry, 0-
WT140003	792887	Sw. Socket, Twin Left Entry, =0
WT140004	-	Sw. Socket, Twin Right Entry, 0=

### Socket, 3 Pin, 10 Amp., IP56



CODE	DESCRIPTION
WT130001	Socket, Single Left Entry, -0
WT130002	Socket, Single Right Entry, 0-
WT130003	Socket, Twin Left Entry, =0
WT130004	Socket, Twin Right Entry, 0=

### Spare Parts



CODE	IMPA	DESCRIPTION
WT150001	792993	Switch Interior
WT150002	792892	Socket Interior
WT150003	792891	Male Plug Interior

## CEE TYPE WIRING ACCESSORIES

### Colour coded for voltage identification

<b>YELLOW</b>	100-130V
<b>BLUE</b>	200-250V
<b>RED</b>	380-415V

### Interlocked switch socket, IP44



CODE	IMPA	DESCRIPTION
WTIL1001	792771	100-130V 16A 3 Pin, 4Hr Earth
WTIL1002	792772	200-250V 16A 3 Pin, 6Hr Earth
WTIL1003	792774	380-415V 16A 4 Pin, 6Hr Earth
WTIL1004	-	380-415V 16A 5 Pin, 6Hr Earth

### Interlocked switch socket, IP67



CODE	IMPA	DESCRIPTION
WTIL2001	792771	100-130V 16A 3 Pin, 4Hr Earth
WTIL2002	792772	200-250V 16A 3 Pin, 6Hr Earth
WTIL2003	792774	380-415V 16A 4 Pin, 6Hr Earth
WTIL2004	-	380-415V 16A 5 Pin, 6Hr Earth
WTIL2005	-	100-130V 32A 3 Pin, 4Hr Earth
WTIL2006	-	200-250V 32A 3 Pin, 6Hr Earth
WTIL2007	-	380-415V 32A 4 Pin, 6Hr Earth
WTIL2008	-	380-415V 32A 5 Pin, 6Hr Earth
WTIL2009	-	380-415V 63A 4 Pin, 6Hr Earth
WTIL2010	-	380-415V 63A 5 Pin, 6Hr Earth





**Male plugs, IP44 Splashproof**



CODE	IMPA	DESCRIPTION
WTP20001	792751	100-130V 16A 3 Pin, 4Hr Earth
WTP20002	792752	200-250V 16A 3 Pin, 6Hr Earth
WTP20003	792754	380-415V 16A 4 Pin, 6Hr Earth
WTP20004	-	380-415V 16A 5 Pin, 6Hr Earth
WTP20005	-	100-130V 32A 3 Pin, 4Hr Earth
WTP20006	-	200-250V 32A 3 Pin, 6Hr Earth
WTP20007	-	380-415V 32A 4 Pin, 6Hr Earth
WTP20008	-	380-415V 32A 5 Pin, 6Hr Earth

**Female coupler, IP44 splashproof**



CODE	DESCRIPTION
WTC20001	100-130V 16A 3 Pin, 4Hr Earth
WTC20002	200-250V 16A 3 Pin, 6Hr Earth
WTC20003	380-415V 16A 4 Pin, 6Hr Earth
WTC20004	380-415V 16A 5 Pin, 6Hr Earth
WTC20005	100-130V 32A 3 Pin, 4Hr Earth
WTC20006	200-250V 32A 3 Pin, 6Hr Earth
WTC20007	380-415V 32A 4 Pin, 6Hr Earth
WTC20008	380-415V 32A 5 Pin, 6Hr Earth

**Male plugs, IP67 watertight**



CODE	IMPA	DESCRIPTION
WTP30001	792751	100-130V 16A 3 Pin, 4Hr Earth
WTP30002	792752	200-250V 16A 3 Pin, 6Hr Earth
WTP30003	792754	380-415V 16A 4 Pin, 6Hr Earth
WTP30004	-	380-415V 16A 5 Pin, 6Hr Earth
WTP30005	-	100-130V 32A 3 Pin, 4Hr Earth
WTP30006	-	200-250V 32A 3 Pin, 6Hr Earth
WTP30007	-	380-415V 32A 4 Pin, 6Hr Earth
WTP30008	-	380-415V 32A 5 Pin, 6Hr Earth
WTP30009	-	380-415v 63A 4 Pin, 6Hr Earth
WTP30010	-	380-415v 63A 5 Pin, 6Hr Earth
WTP30011	-	380-415v 125A 4 Pin, 6Hr Earth
WTP30012	-	380-415v 125A 5 Pin, 6Hr Earth

**Female coupler, IP67 watertight**



CODE	DESCRIPTION
WTC30001	100-130V 16A 3 Pin, 4Hr Earth
WTC30002	200-250V 16A 3 Pin, 6Hr Earth
WTC30003	380-415V 16A 4 Pin, 6Hr Earth
WTC30004	380-415V 16A 5 Pin, 6Hr Earth
WTC30005	100-130V 32A 3 Pin, 4Hr Earth
WTC30006	200-250V 32A 3 Pin, 6Hr Earth
WTC30007	380-415V 32A 4 Pin, 6Hr Earth
WTC30008	380-415V 32A 5 Pin, 6Hr Earth
WTC30009	380-415v 63A 4 Pin, 6Hr Earth
WTC30010	380-415v 63A 5 Pin, 6Hr Earth
WTC30011	380-415v 125A 4 Pin, 6Hr Earth
WTC30012	380-415v 125A 5 Pin, 6Hr Earth





Wall Sockets, IP67 watertight



CODE	IMPA	DESCRIPTION
WTR30001	792761	100-130V 16A 3 Pin, 4Hr Earth
WTR30002	792762	200-250V 16A 3 Pin, 6Hr Earth
WTR30003	792764	380-415V 16A 4 Pin, 6Hr Earth
WTR30004	-	380-415V 16A 5 Pin, 6Hr Earth
WTR30005	-	100-130V 32A 3 Pin, 4Hr Earth
WTR30006	-	200-250V 32A 3 Pin, 6Hr Earth
WTR30007	-	380-415V 32A 4 Pin, 6Hr Earth
WTR30008	-	380-415V 32A 5 Pin, 6Hr Earth
WTR30009	-	380-415v 63A 4 Pin, 6Hr Earth
WTR30010	-	380-415v 63A 5 Pin, 6Hr Earth
WTR30011	-	380-415v 125A 4 Pin, 6Hr Earth
WTR30012	-	380-415v 125A 5 Pin, 6Hr Earth

Wall sockets, IP44 splashproof



CODE	IMPA	DESCRIPTION
WTR20001	792761	100-130V 16A 3 Pin, 4Hr Earth
WTR20002	792762	200-250V 16A 3 Pin, 6Hr Earth
WTR20003	792764	380-415V 16A 4 Pin, 6Hr Earth
WTR20004	-	380-415V 16A 5 Pin, 6Hr Earth
WTR20005	-	100-130V 32A 3 Pin, 4Hr Earth
WTR20006	-	200-250V 32A 3 Pin, 6Hr Earth
WTR20007	-	380-415V 32A 4 Pin, 6Hr Earth
WTR20008	-	380-415V 32A 5 Pin, 6Hr Earth

Cables &  
Accessories?  
Check it out  
page 21

JAPANESE WIRING ACCESSORIES

Plugs, Synthetic Resin, 3 Pin



CODE	IMPA	DESCRIPTION
WT160001	792801	Straight, 1MA
WT160002	792802	Angled, 1MB

Socket, Synthetic Resin, 3 Pin



CODE	IMPA	DESCRIPTION
WT170001	792806	1 Gang, Type 1M
WT170002	792831	2 Gang

Switch Socket, Synthetic Resin, 3 Pin



CODE	IMPA	DESCRIPTION
WT170003	792808	1 Gang, Type S1MR

Rotary Switch, Synthetic Resin, 2 Pole 10A



CODE	IMPA	DESCRIPTION
WT180001	793015	Type 1MR





## INDOOR WIRING ACCESSORIES

### Euro Schuko sockets, 2 pin with earth contact



CODE	IMPA	DESCRIPTION
WAE10001	792922	Single, surface mounted
WAE10002	792923	Double, surface mounted
WAE10003	-	Single, flush mounted
WAE10004	-	Single, splashproof, IP44
WAE10005	-	Double, splashproof, IP44

### Euro light switches, double pole



CODE	IMPA	DESCRIPTION
WAE30001	793091	Surface, single switch
WAE30002	793092	Flush, single switch
WAE30003	-	Surface, splashproof, single, IP44

### UK sockets, 13A, White



CODE	DESCRIPTION
WAU10001	Single unswitched
WAU10002	Twin unswitched
WAU10003	Single switched double pole
WAU10004	Twin switched double pole
WAU10005	Single with USB outlet
WAU10006	Twin with USB outlet

### UK light switches, 10A



CODE	DESCRIPTION
WAU30001	1 gang 1 way
WAU30002	1 gang 2 way
WAU30003	2 gang 2 way

### Euro Schuko plug 2 pin with earth contact



CODE	IMPA	DESCRIPTION
WAE20001	792921	Plastic, male
WAE20002	-	Rubber male
WAE20003	-	Rubber, female

### Euro Schuko distribution socket with cable & plug



CODE	IMPA	DESCRIPTION
WAE40001	-	4 gang, 1.4 Metre
WAE40002	792967	4 gang, 3 Metre

### Euro Schuko cable extension reel



CODE	IMPA	DESCRIPTION
WAE50001	794396	25 Metre, 3 core 1.5mm
WAE50002	794397	50 Metre, 3 core 1.5mm

### UK plugs, 13A



CODE	DESCRIPTION
WAU20001	Plastic, male
WAU20002	Rubber male
WAU20003	Rubber, female

### UK mounting boxes, White



CODE	DESCRIPTION
WAU40001	Single 16mm deep
WAU40002	Single 25mm deep
WAU40003	Twin 25mm deep





UK 13A distribution socket with cable & plug



CODE	IMPA	DESCRIPTION
WAU50001	-	4 gang, 1 Metre
WAU50002	792988	4 gang, 3 Metre

UK 13A cable extension socket reel



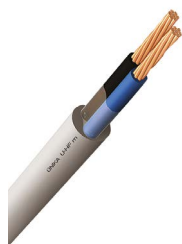
CODE	DESCRIPTION
WAU60001	25 Metre, 3 core 1.5mm
WAU60002	50 Metre, 3 core 1.5mm

Convertor plugs



CODE	DESCRIPTION
WAC10001	UK male / Euro female
WAC10002	Euro Male / UK female

CABLE



Marine Power Cable, 0.6/1kV, IEC 60092-353, Zero Halogen, Flame Retardant, Low Smoke		
CODE	IMPA	DESCRIPTION
CM100001	794278	2 Core 1.5mm
CM100002	794283	3 Core 1.5mm
CM100003	794284	3 Core 2.5mm
CM100004	794285	3 Core 4.0mm
CM100005	794286	3 Core 6.0mm
CM100006	794289	4 Core 1.5mm
CM100007	794290	4 Core 2.5mm
CM100008	794291	4 Core 4.0mm
CM100009	794292	4 Core 6.0mm
CM100010	-	5 Core 1.5mm
CM100011	-	5 Core 2.5mm
CM100012	-	7 Core 1.5mm
CM100013	-	12 Core 1.5mm



Screened Marine Telecommunication & Control Cable, 250V, IEC 60092-376, Zero Halogen, Flame Retardant, Low Smoke	
CODE	DESCRIPTION
CM300001	1 Pair, 0.75mm, 1x2x0.75mm
CM300002	2 Pair, 0.75mm, 2x2x0.75mm
CM300003	3 Pair, 0.75mm, 3x2x0.75mm
CM300004	4 Pair, 0.75mm, 4x2x0.75mm
CM300005	5 Pair, 0.75mm, 5x2x0.75mm
CM300006	7 Pair, 0.75mm, 7x2x0.75mm
CM300007	8 Pair, 0.75mm, 8x2x0.75mm
CM300008	10 Pair, 0.75mm, 10x2x0.75mm
CM300009	12 Pair, 0.75mm, 12x2x0.75mm



Armoured, Marine Power Cable, 0.6/1kV, IEC 60092-353, Zero Halogen, Flame Retardant, Low Smoke		
CODE	IMPA	DESCRIPTION
CM200001	794334	2 Core 1.5mm
CM200002	794339	3 Core 1.5mm
CM200003	794340	3 Core 2.5mm
CM200004	794341	3 Core 4.0mm
CM200005	794342	3 Core 6.0mm
CM200006	794345	4 Core 1.5mm
CM200007	794346	4 Core 2.5mm
CM200008	794347	4 Core 4.0mm
CM200009	794348	4 Core 6.0mm
CM200010	-	5 Core 1.5mm
CM200011	-	5 Core 2.5mm
CM200012	794327	7 Core 1.5mm
CM200013	794328	12 Core 1.5mm
CM200014	794329	19 Core 1.5mm





H05-K single core cable, power & control, flamed retardant, 300/500V



CODE	COLOUR	DESCRIPTION
CSC10001	Black	0.75mm
CSC10002	Blue	0.75mm
CSC10003	Green / Yellow	0.75mm
CSC10004	Red	0.75mm
CSC10005	White	0.75mm
CSC20001	Black	1.0mm
CSC20002	Blue	1.0mm
CSC20003	Green / Yellow	1.0mm
CSC20004	Red	1.0mm
CSC20005	White	1.0mm
CSC30001	Black	1.5mm
CSC30002	Blue	1.5mm
CSC30003	Green / Yellow	1.5mm
CSC30004	Red	1.5mm
CSC30005	White	1.5mm
CSC40001	Black	2.5mm
CSC40002	Blue	2.5mm
CSC40003	Green / Yellow	2.5mm
CSC40004	Red	2.5mm
CSC40005	White	2.5mm

H07 RN-F rubber cable, oil resistant, flame retardant, 450/750V



CODE	IMPA	DESCRIPTION
CR100001	794122	2 Core 1.5mm
CR100002	794132	3 Core 1.5mm
CR100003	794133	3 Core 2.5mm
CR100004	794134	3Core 4.0mm
CR100005	794335	3 Core 6.0mm
CR100006	794142	4 Core 1.5mm
CR100007	794143	4 Core 2.5mm
CR100008	794144	4 Core 4.0mm
CR100009	794145	4 Core 6.0mm
CR100010	-	5 Core 1.5mm
CR100011	-	5 Core 2.5mm
CR100012	-	5 Core 4.0mm
CR100013	-	5 Core 6.0mm

## JUNCTION BOXES

**Insulated ABS Enclosure, RAL0735 With Back Plate, Door Lock & Fixing Brackets, IP65**



**Steel Wall box, Painted RAL7032 Textured Polyester Powder With Mounting Plate & Door Lock, IP65**



CODE	DESCRIPTION
JB400001	300x250x130mm
JB400002	400x300x190mm
JB400003	500x400x245mm
JB400004	600x400x200mm

CODE	DESCRIPTION
JB300001	300x300x150mm
JB300002	400x300x200mm
JB300003	500x400x200mm
JB300004	600x400x250mm

**HNA Brass Junction Boxes With Glanded Cable Entries & 4 Way 2.5mm Terminal Block, IP56**



CODE	DESCRIPTION
JB100001	Through cable entry, -0-

CODE	DESCRIPTION
JB100002	Twin cable entry, 0=



CODE	DESCRIPTION
JB100003	Two in, One out cable entry, =0-

CODE	DESCRIPTION
JB100004	Tee cable entry, T



CODE	DESCRIPTION
JB100005	Twin through cable entry, =0=

CODE	DESCRIPTION
JB100006	Cross 4 way entry, X





**Polypropylene Junction Box With Threaded Cable Entries & Terminal Block, RAL7035 Grey, IP66/67**



CODE	DESCRIPTION
<b>JB200001</b>	185x85x51mm, 5 pole 4mm terminal

CODE	DESCRIPTION
<b>JB200002</b>	110x110x66mm, 5 pole 6mm terminal

CODE	DESCRIPTION
<b>JB200003</b>	140x140x82mm, 5 pole 10mm terminal

CODE	DESCRIPTION
<b>JB200004</b>	160x140x81mm, 5 pole 10mm terminal

**CABLE GLANDS**

**Polyamide Cable Gland & Locknut, RAL7035 Grey, IP68**



CODE	DESCRIPTION
<b>CG100001</b>	M12x1.5, cable dia. 3 - 7mm
<b>CG100002</b>	M16x1.5, cable dia. 4.5 - 10mm
<b>CG100003</b>	M20x1.5, cable dia. 6 - 13mm
<b>CG100004</b>	M20Lx1.5, cable dia. 7.5 - 14mm
<b>CG100005</b>	M25x1.5, cable dia. 9 - 17mm
<b>CG100006</b>	M32x1.5, cable dia. 13 - 21mm
<b>CG100007</b>	M32x1.5, cable dia. 19 - 25mm
<b>CG100008</b>	M40x1.5, cable dia. 16 - 28mm

**Nickel Plated Brass Cable Gland & Locknut, IP68**



CODE	DESCRIPTION
<b>CG200001</b>	M12x1.5, cable dia. 3 - 7mm
<b>CG200002</b>	M16x1.5, cable dia. 4.5 - 10mm
<b>CG200003</b>	M20x1.5, cable dia. 6 - 13mm
<b>CG200004</b>	M25x1.5, cable dia. 9 - 17mm
<b>CG200005</b>	M32x1.5, cable dia. 13 - 21mm
<b>CG200006</b>	M40x1.5, cable dia. 16 - 28mm

**CRIMP TERMINALS**

**Pre-insulated Crimp Terminals, Colour Coded For Cable Size**

CODE	DESCRIPTION
<b>RED</b>	0.5 - 1.5mm <sup>2</sup>
<b>BLUE</b>	1.5 - 2.5mm <sup>2</sup>
<b>YELLOW</b>	4.0 - 6.0mm <sup>2</sup>

**Male Tab**



CODE	DESCRIPTION
<b>CMT10001</b>	Red, 6.3mm tab
<b>CMT10002</b>	Blue, 6.3mm tab
<b>CMT10003</b>	Yellow, 6.3mm tab

**Female Bullet**



CODE	IMPA	DESCRIPTION
<b>CFB10001</b>	-	Red, 4.0mm
<b>CFB10002</b>	-	Blue, 4.0mm
<b>CFB10003</b>	-	Blue, 5.0mm
<b>CFB10004</b>	-	Yellow, 5.0mm

**Male Bullet**



CODE	IMPA	DESCRIPTION
<b>CMB10001</b>	-	Red, 4.0mm
<b>CMB10002</b>	-	Blue, 4.0mm
<b>CMB10003</b>	-	Blue, 5.0mm
<b>CMB10004</b>	-	Yellow, 5.0mm





### Ring Terminals



CODE	IMPA	DESCRIPTION
CRT10001	-	Red, 3.2mm stud
CRT10002	-	Red, 3.7mm stud
CRT10003	794521	Red, 4.3mm stud
CRT10004	-	Red, 5.3mm stud
CRT10005	-	Red, 6.5mm stud



CODE	IMPA	DESCRIPTION
CRT10006	794522	Blue, 3.2mm stud
CRT10007	-	Blue, 3.7mm stud
CRT10008	794523	Blue, 4.3mm stud
CRT10009	794524	Blue, 5.3mm stud
CRT10010	794525	Blue, 6.5mm stud
CRT10011	794526	Blue, 8.5mm stud



CODE	IMPA	DESCRIPTION
CRT10012	-	Yellow, 3.7mm stud
CRT10013	794527	Yellow, 4.3mm stud
CRT10014	-	Yellow, 5.3mm stud
CRT10015	794528	Yellow, 6.5mm stud
CRT10016	-	Yellow, 8.5mm stud
CRT10017	794529	Yellow, 10mm stud
CRT10018	-	Yellow, 12mm stud

### Folk Terminals



CODE	IMPA	DESCRIPTION
CFT10001	794531	Red, 3.2mm opening
CFT10002	794532	Red, 3.7mm opening
CFT10003	794541	Red, 4.3mm opening
CFT10004	-	Red, 5.3mm opening
CFT10005	-	Red, 6.5mm opening



CODE	IMPA	DESCRIPTION
CFT10006	-	Blue, 3.2mm opening
CFT10007	-	Blue, 3.7mm opening
CFT10008	794533	Blue, 4.3mm opening
CFT10009	794535	Blue, 5.3mm opening
CFT10010	794525	Blue, 6.5mm opening



CODE	IMPA	DESCRIPTION
CFT10011	-	Yellow, 3.7mm opening
CFT10012	794536	Yellow, 4.3mm opening
CFT10013	-	Yellow, 5.3mm opening
CFT10014	794528	Yellow, 6.5mm opening

### Female Receptacle



CODE	IMPA	DESCRIPTION
CFR10001	794546	Red, 4.8mm receptacle
CFR10002	794547	Red, 6.3mm receptacle



CODE	IMPA	DESCRIPTION
CFR10003	794548	Blue, 4.8mm receptacle
CFR10004	794549	Blue, 6.3mm receptacle



CODE	IMPA	DESCRIPTION
CFR10005	794550	Yellow, 6.3mm receptacle

### Female Receptacle, Fully Insulated



CODE	IMPA	DESCRIPTION
CIR10001	-	Red, 4.8mm receptacle
CIR10002	-	Red, 6.3mm receptacle



CODE	IMPA	DESCRIPTION
CIR10003	-	Blue, 4.8mm receptacle
CIR10004	-	Blue, 6.3mm receptacle



CODE	IMPA	DESCRIPTION
CIR10005	-	Yellow, 6.3mm receptacle

### Flat Blade



CODE	IMPA	DESCRIPTION
CBL10001	-	Red, 10mm blade
CBL10002	-	Red, 14mm blade



CODE	IMPA	DESCRIPTION
CBL10003	-	Blue, 9mm blade



CODE	IMPA	DESCRIPTION
CBL10004	-	Yellow, 10mm blade
CBL10005	-	Yellow, 18mm blade

### Wire Pin



CODE	IMPA	DESCRIPTION
CWP10001	-	Red, 9mm pin
CWP10002	794581	Red, 12mm pin



CODE	IMPA	DESCRIPTION
CWP10003	-	Blue, 9mm pin
CWP10004	794582	Blue, 12mm pin



CODE	IMPA	DESCRIPTION
CWP10005	794583	Yellow, 14mm pin







### Butt Splice



CODE	IMPA	DESCRIPTION
<b>CBS10001</b>	<b>794575</b>	Red
<b>CBS10002</b>	-	Blue
<b>CBS10003</b>	<b>794576</b>	Yellow

### Bootlace Ferrules, French Colours



CODE	IMPA	DESCRIPTION
<b>CCE10001</b>	-	Violet, 0.25mm
<b>CCE10002</b>	-	Pink, 0.34mm
<b>CCE10003</b>	-	White, 0.5mm
<b>CCE10004</b>	-	Blue, 0.75mm
<b>CCE10005</b>	-	Red, 1.0mm
<b>CCE10006</b>	-	Black, 1.5mm
<b>CCE10007</b>	-	Grey, 2.5mm
<b>CCE10008</b>	-	Orange, 4.0mm
<b>CCE10009</b>	-	Green, 6.0mm
<b>CCE10010</b>	-	Brown, 10.0mm
<b>CCE10011</b>	-	Ivory, 16.0mm

### Copper Tube Ring Terminals, Uninsulated



CODE	IMPA	DESCRIPTION
<b>CTT10001</b>	<b>794651</b>	Cable Size > 1.5mm, Stud M3
<b>CTT10002</b>	<b>794652</b>	Cable Size > 1.5mm, Stud M4
<b>CTT10003</b>	<b>794653</b>	Cable Size > 1.5mm, Stud M5
<b>CTT10004</b>	<b>794654</b>	Cable Size > 2.5mm, Stud M4
<b>CTT10005</b>	<b>794655</b>	Cable Size > 2.5mm, Stud M5
<b>CTT10006</b>	<b>794656</b>	Cable Size > 2.5mm, Stud M6
<b>CTT10007</b>	<b>794658</b>	Cable Size > 6.0mm, Stud M4
<b>CTT10008</b>	<b>794659</b>	Cable Size > 6.0mm, Stud M5
<b>CTT10009</b>	<b>794660</b>	Cable Size > 6.0mm, Stud M6
<b>CTT10010</b>	<b>794661</b>	Cable Size > 6.0mm, Stud M8
<b>CTT10011</b>	<b>794662</b>	Cable Size > 6.0mm, Stud M10
<b>CTT10012</b>	<b>794663</b>	Cable Size > 10.0mm, Stud M5
<b>CTT10013</b>	<b>794664</b>	Cable Size > 10.0mm, Stud M6
<b>CTT10014</b>	<b>794665</b>	Cable Size > 10.0mm, Stud M8
<b>CTT10015</b>	<b>794666</b>	Cable Size > 10.0mm, Stud M10
<b>CTT10016</b>	-	Cable Size > 16.0mm, Stud M6
<b>CTT10017</b>	<b>794506</b>	Cable Size > 16.0mm, Stud M8
<b>CTT10018</b>	<b>794508</b>	Cable Size > 16.0mm, Stud M10
<b>CTT10019</b>	-	Cable Size > 16.0mm, Stud M12
<b>CTT10020</b>	<b>794511</b>	Cable Size > 25.0mm, Stud M8
<b>CTT10021</b>	<b>794512</b>	Cable Size > 25.0mm, Stud M10
<b>CTT10022</b>	-	Cable Size > 25.0mm, Stud M12
<b>CTT10023</b>	<b>794514</b>	Cable Size > 35.0mm, Stud M8
<b>CTT10024</b>	-	Cable Size > 35.0mm, Stud M10
<b>CTT10025</b>	-	Cable Size > 35.0mm, Stud M12

### Copper Tube Butt Splice, Uninsulated



CODE	IMPA	DESCRIPTION
<b>CTS10001</b>	<b>794671</b>	Cable size > 1.5mm
<b>CTS10002</b>	<b>794672</b>	Cable Size > 2.5mm
<b>CTS10003</b>	<b>794673</b>	Cable size > 6.0mm
<b>CTS10004</b>	<b>794674</b>	Cable size > 10.0mm
<b>CTS10005</b>	-	Cable size > 16.0mm
<b>CTS10006</b>	-	Cable size > 25.0mm
<b>CTS10007</b>	-	Cable size > 35.0mm

## WIRE CONNECTORS & TERMINALS

### Connector Strips, 12 Way, Flexible



CODE	IMPA	DESCRIPTION
<b>CCS10001</b>	-	3 Amp
<b>CCS10002</b>	<b>794636</b>	5 Amp
<b>CCS10003</b>	<b>794637</b>	15 Amp
<b>CCS10004</b>	<b>794638</b>	30 Amp
<b>CCS10005</b>	<b>794640</b>	60 Amp

### Wire terminal, lever clamp, 400V 32A 4.0mm



CODE	DESCRIPTION
<b>CCS20001</b>	2 pole
<b>CCS20002</b>	3 pole
<b>CCS20003</b>	5 pole



### Din Rail Terminal Accessories



CODE	DESCRIPTION
CCS40001	End / intermediate piece, Grey
CCS40002	Stop end, screwless, Grey
CCS40003	Insulated jumper, 2 Way, Grey
CCS40004	Insulated jumper, 3 Way, Grey
CCS40005	Insulated jumper, 5 Way, Grey

### Wire Terminal, Push Wire, 450V 24A, 0.5 – 2.5mm



CODE	DESCRIPTION
CCS30001	2 pole, White
CCS30002	3 pole, Orange
CCS30003	4 pole, Red
CCS30004	5 pole, Yellow

### Weatherproof Sealing Compound



CODE	IMPA	DESCRIPTION
CSC10001	795501	Duct-Seal, 1lb / 450grm

### 3M Specialist Tapes



CODE	IMPA	DESCRIPTION
TPS10001	795436	Type 23, EPR self-amalgamating, 19mm x 9.1Mtr
TPS10002	795427	Type 27, High temp. glass cloth, 12mm x 20Mtr
TPS10003	-	Type 33 Plus, Vinyl, 19mm x 20Mtr
TPS10004	-	Type 88, Heavy duty Vinyl, 19mm x 20Mtr

### Heat shrink sleeving, 3:1 ratio, 1.2 Metre, adhesive lined



CODE	DESCRIPTION
CHS10001	3.2mm, Black
CHS10002	4.8mm, Black
CHS10003	6.4mm, Black
CHS10004	9.5mm, Black
CHS10005	12.7mm, Black
CHS10006	19.1mm, Black
CHS10007	25.4mm, Black
CHS10008	38mm, Black
CHS10009	50mm, Black

### Din Rail Terminal, TS35 Rail



CODE	DESCRIPTION
CCS30001	0.5 - 4.0mm, Grey
CCS30002	0.5 - 4.0mm, Green / Yellow

### Din Rail



CODE	DESCRIPTION
CCS50001	TS35 Din rail, 1 Metre
CCS50002	TS35 Din rail, slotted, 1 Metre

## CABLE TIES, TAPE & INSULATION

### Stainless Steel 304 Cable Tie, Ball-lock



CODE	DESCRIPTION
CTS10001	200x4.6mm, Pkt. 100
CTS10002	300x4.6mm.Pkt. 100
CTS10003	360x4.6mm, Pkt.100

### PVC Insulation tape, 19mm x 20Mtrs



CODE	IMPA	DESCRIPTION
TP100001	795431	Black
TP100002	795431	Blue
TP100003	795431	Brown
TP100004	795431	Green
TP100005	795431	Green / Yellow
TP100006	795431	Grey
TP100007	795431	Red
TP100008	795431	White
TP100009	795431	Yellow



Nylon 6.6 Cable Ties, UV942



CODE	IMPA	DESCRIPTION
CTB10001	794851	Black, 100x2.5mm, Pkt.100
CTN10001	794851	Natural, 100x2.5mm, Pkt.100
CTB10002	794852	Black, 140x3.6mm, Pkt.100
CTN10002	794852	Natural, 140x3.6mm, Pkt.100
CTB10003	794853	Black, 200x4.8mm, Pkt.100
CTN10003	794853	Natural, 200x4.8mm, Pkt.100
CTB10004	794855	Black, 300x4.8mm, Pkt.100
CTN10004	794855	Natural, 300x4.8mm, Pkt.100
CTB10005	794856	Black, 370x4.8mm, Pkt.100
CTN10005	794856	Natural, 370x4.8mm, Pkt.100
CTB10006	-	Black, 370x7.6mm, Pkt.100
CTN10006	-	Natural, 370x7.6mm, Pkt.100

BATTERIES

Duracell PROCELL Alkaline batteries



CODE	IMPA	DESCRIPTION
BT100001	792424	MN2400 Size AAA 1.5V, Pkt.10
BT100002	792423	MN1500 Size AA 1.5V, Pkt.10
BT100003	792422	MN1400 Size C 1.5V, Pkt.10
BT100004	792421	MN1300 Size D 1.5V, Pkt.10
BT100005	792426	MN1604 Size Mono E, 9V, Pkt.10

Duracell PROCELL Lithium batteries

CODE	IMPA	DESCRIPTION
BT200001	-	CR123, Camera Cell, 3V
BT200002	792420	CR2025, Coin Cell, 3V
BT200003	792413	CR2032, Coin Cell, 3V
BT200004	792419	CR2016, Coin Cell, 3V



Sealed Lead acid battery for security, emergency lighting, telecom, UPS etc.



CODE	IMPA	DESCRIPTION
BT300001	-	12V 7Ah, 151x65x94.5mm
BT300002	792420	12V 12Ah, 151x98x95mm
BT300003	792413	12V 18Ah, 181.5x77 x167.5mm
BT300004	792419	12V 24Ah, 166.5x175 x125mm





## **Marine Electrical Specialists**

**Seaforth Marine & Offshore Limited  
Unit 38 Millers Bridge Ind. Estate  
Seymour Street, Bootle, L20 1EE  
United Kingdom**

**Tel: +44 (0)151 922 1920  
Fax: +44 (0)151 922 1910**

**Website: [www.seaforthmarine.co.uk](http://www.seaforthmarine.co.uk)  
Email: [sales@seaforthmarine.co.uk](mailto:sales@seaforthmarine.co.uk)**